

TREADX™ is a revolutionary temporary stair pan tread that was designed to help increase job-site safety and to minimize labor, material and insurance costs.

Key Product Features

- Fits 1.5" and 2" Fill Stair Pans
- Permanent Non-Skid Surface
- Safety Stripe
- Class B Fire Rating
- Easy to Install & Remove – No Tools Needed
- Non-Conductive
- Exceeds OSHA Standards
- Impervious to Weather & Water
- LEED Compliant
- Reusable / Stackable / Recyclable

Key Product Specifications

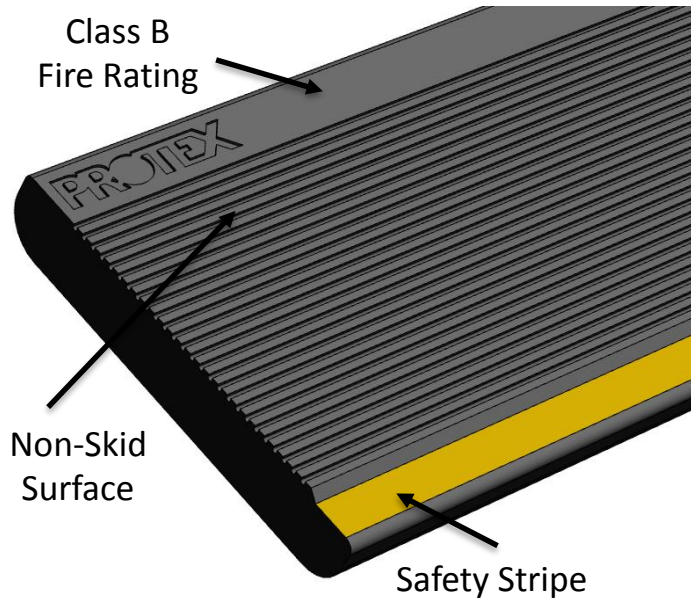
- 3 Standard Widths (41.75", 44.75" and 47.75")
- Custom Widths available up to 16'
- Load Rating exceeds 100 psf / Concentrated Load Rating exceeds 300 psf
- Made In USA
- Patent Pending

TREADX™
Temporary Stair Pan Tread

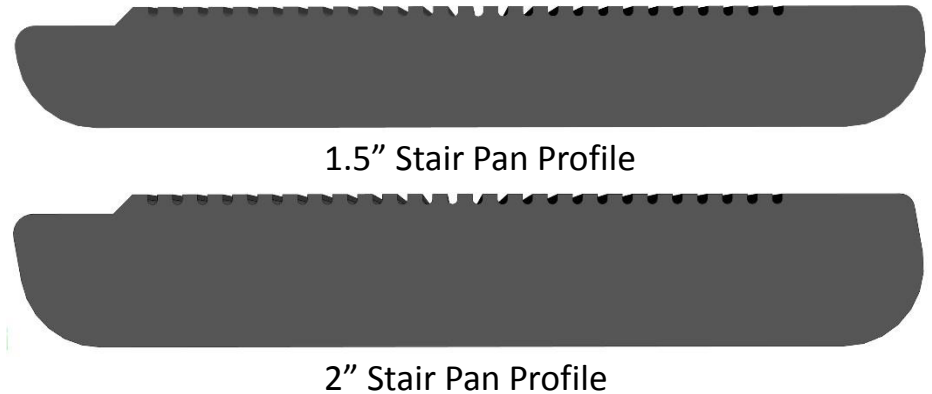


Key Design Features & Benefits

Improved Job-Site Safety

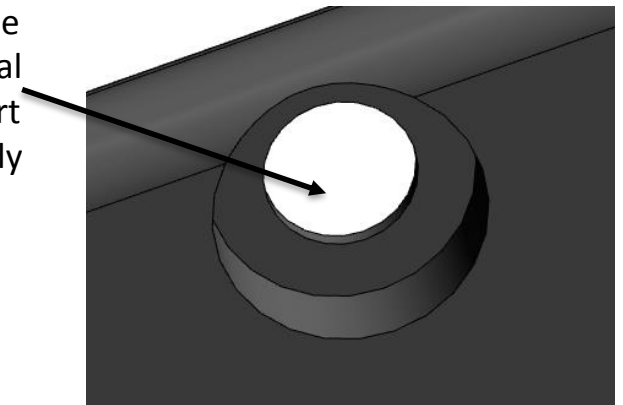


Universal Fitment



Ease of Installation / Removal

Ergonomic Removal Hole designed for fast removal and to securely transport on job-site via cart / dolly



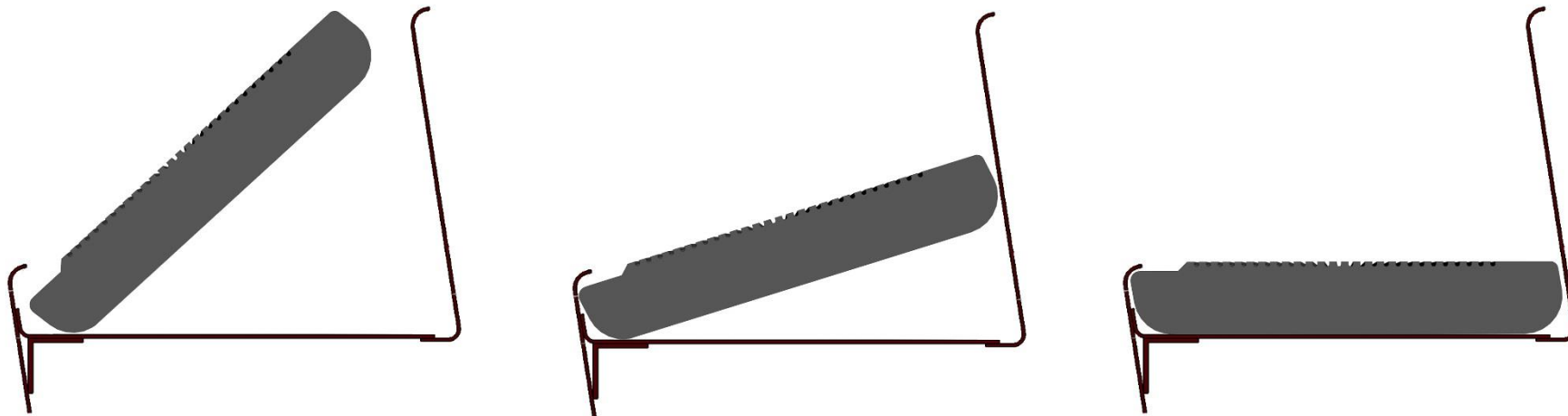
Removal Hole Plugs are included to minimize debris in stair pans

Optional Company / Project Branding



Installation

Place front / bullnose of TREADX under bullnose of Stair Pan and rotate / drop back into pan and then press fit plug in removal hole

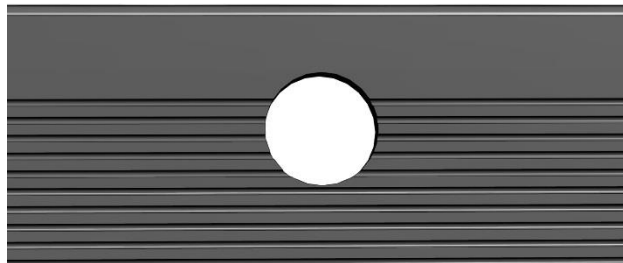


Removal

Remove Plug from removal hole – insert finger, hammer, prybar, utility bar, T-Style hook, etc. into removal hole and pull up and towards bullnose so TREADX pivots against the bullnose into upright position to lift out.



Removal Hole Plug



TREADX™

Temporary Stair Pan Tread

For more information contact:

EBERL

IRON WORKS, INC.®

Serving the Needs of our Customers since 1923

716-854-7633
800-285-3056
sales@eberliron.com

128 Sycamore Street
Buffalo, NY 14204-1492
www.eberliron.com

