



STAIRMASTER® NITEGLOW® SAFETY RENOVATION TREADS

STAIRMASTER® NITEGLOW® TREADS PROVIDE:

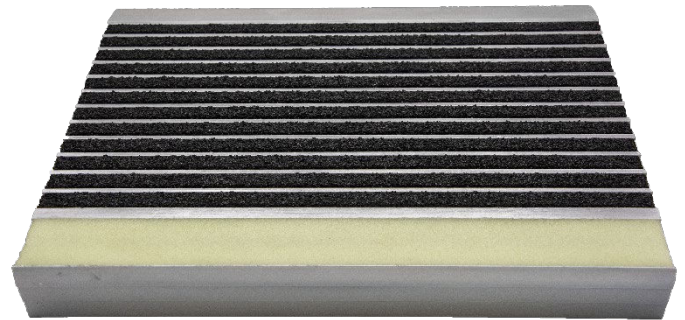
High quality photoluminescent anti-slip renovation stair tread providing exit path marking and safety egress system that meets NYC Local Law 26, 2009 IBC and 2009 IFC code. These renovation treads can be used for exit markings, steps and leading edges of landings when finding pathways in the dark is a necessity. The use of heat-treated corrosion resistant aluminum substrate with a nearly diamond hard aluminum oxide filler assures long tread life under heavy pedestrian use. Stairmaster® NITEGLOW® safety surfaces have easy maintenance features and insure greatest protection from falls and injuries.

STAIRMASTER NITEGLOW® FEATURES:

- Extruded aluminum base type 6063-T5
- Maximum length 12'
- Front 1 1/8" edge glows-in-the-dark
- High content of aluminum oxide abrasive filler
- Colors extend throughout filler
- Excellent anti-slip characteristics
- Complies with 2009 International Building and International Fire Codes

STAIRMASTER SPECIFICATION:

- Stairmaster® type 500-NG safety renovation treads as manufactured by Wooster Products Inc for interior and exterior stair renovation.
- Photoluminescent front groove to be filled with 16% minimum resilient type epoxy filler for improved clean ability. Remaining grooves filled with anti-slip filler containing not less than 65% virgin grain Aluminum Oxide/Silicon Carbide abrasive.
- Type of anchor shall be specified.
- Comply with all requirements of NY City local law 26 (2004) RS 6-1, viz., flammability (ASTM D635-2003), toxicity (SMP 800C), washability (ASTM 4828-1994), radioactivity (ASTM D3684-2004) and brightness (ISO17398-2004).
- Noncombustible, free of hazardous and radioactive substances.



Type 500-NG

9" wide, 9/32" thick, nose 1 1/8"
underside, beveled back
1 1/8" glow strip in front
DRAWING NOT TO
SCALE

The type 500-NG is available with the following types of anchors: Tapcon, Wood Screws, Machine Screws, Screws & Expansion Shields

GUIDELINES FOR THE INSTALLATION OF WOOSTER SAFETY STAIR TREADS OVER EXISTING STAIRS:

An application of leveling compound should be made over dished or worn stairs to provide a level-bearing surface for the safety stair treads. Smooth steps such as marble, terrazzo, tile, etc. should be roughed up to insure good adhesion. All other surfaces need only to be thoroughly cleaned. Mix compound in a mortar pan and trowel to a featheredge with a board held against the front edge of the step. (See drum for complete mixing instructions.) Compound dries in 2 - 4 hours.

The treads may be fastened down using Tapcon screws. Drill a pilot hole using a 5/32" drill bit. Coat step and back of tread with Construction Adhesive. Place the tread in position and drive anchor through tread with a Phillips screwdriver. The treads may also be fastened with screws and lead expansion shields: Using tread as a template, mark holes and drill using a 5/16" carbide tipped drill bit. Dip each shield in construction adhesive and insert into holes. Apply adhesive to step and back of safety tread. Place the step in position. Fasten down with flat head screws. Do not use power tools to tighten screws at risk of stripping threads. (For wood stairs, follow above instructions using wood screws with a drilled pilot hole.) (For metal stairs, follow above instructions using machine screws and nuts.)

After treads have been fastened, the stairway can be given a brand-new look by painting the risers, stringers and around the treads.

WOOSTER PRODUCTS INC, 1000 SPRUCE ST., WOOSTER, OH 44691

Toll Free: 800-321-4936 Phone: 330-264-2844 Fax: 330-262-4151

Web Site: <http://www.woosterproducts.com> E-mail: sales@wooster-products.com